



FCW, LLC  
5370 US HWY 77  
Cortland, NE 68331  
Phone: 402-798-8383  
www.fcwguns.com  
www.marvelprecision.com  
Email: info@fcwguns.com



## Firing Pin Removal/Installation Instructions

Remove magazine and lock your conversion slide back and confirm the chamber is empty.

Use our takedown tool to loosen the guide rod, then remove slide stop assembly and pull slide from frame. Completely unscrew guide rod and remove from slide assembly being careful to maintain control of the recoil spring which will be under slight compression. Separate slide from barrel.



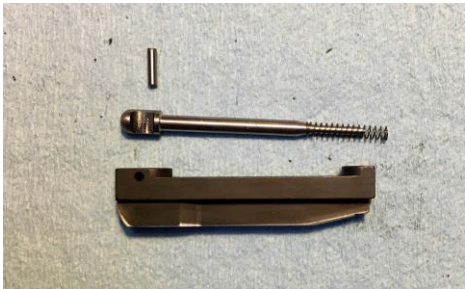
Use a small roll pin punch and remove the extractor roll pin. This MUST be driven from bottom through top or damage to the slide will occur. Remove extractor and spring from slide and set aside.



Using a T-10 torx driver (our older models used a T-9 driver) remove the breech block retaining screw. You may need to apply heat to the screw area as these are retained with a permanent Loctite.



Remove breech block from the slide. A gentle tap may be required to remove the block due to our snug fit. Support breech block on a hard surface and drive the firing pin retaining pin out using a 3/32" punch. Remove firing pin and spring and clean the interior of the breech block.





*Start the firing pin retaining pin into the breech block. Install the firing pin and firing pin spring. Index the firing pin head notch so as the retaining pin goes in it clears the firing pin without damage. Set on a hard surface and compress the breech block assembly while driving the retaining pin to flush.*



*Confirm the firing pin retaining pin is flush on both sides. Install back into the slide. Tap the breech block with a plastic/wood dowel to confirm it has been seated flush in the slide. Make sure the breech block retaining screw and threaded hole in the slide have been cleaned with alcohol. Using a permanent (red) Loctite on the threads of the screw install screw into slide and tighten.*



*Start extractor roll pin into top of slide. Insert extractor spring and extractor into slide and hold flush to side of slide. Make sure extractor is pulled back onto the breech block face. This will create proper alignment for the roll pin. Drive extractor roll pin just past flush using a 1/8" roll pin punch.*

*Confirm firing pin and extractor operates smoothly. Slide barrel assembly back into slide and reinstall the guide rod and recoil spring. Install your conversion back onto the frame, install slide stop assembly and tighten the guide rod. Confirm function of all safety features and operation of the firearm.*